



A COMMON

MORRIS

& Mae

COLLECTIVE

EVENT GUIDE

TABLE OF CONTENTS

GET TO KNOW US.....2
EVENT SPACES.....3
EVENT SPACE OVERVIEW.....5
DETAILS TO NOTE.....6
EVENT FLOOR PLAN.....7
CATERING OPTIONS8
BEVERAGE OPTIONS.....9



GET TO KNOW US

Welcome to Morris & Mae Collective, a premier bar and event venue near Red Rocks Amphitheatre. We're delighted you're considering us for your event! Our mission is to deliver exceptional service and create unforgettable experiences that exceed your expectations.

With versatile spaces designed for gatherings of 10 to 250 guests, we're ready to bring your vision to life. Proudly local and women-owned, we can't wait to make your event truly special.

EVENT SPACES

Morris & Mae Full Sell Out

Reserve the entire Morris & Mae Venue to give your guests a full experience of an intimate reception hall with access to our full bar. This option is ideal for large events with a capacity of 80-250 guests.

The venue features lounge areas, tall community tables, traditional tables, chairs, bar, stadium seating, private huddle spaces, and patio space. It is equipped with AV equipment such as a projector with Apple TV and HDMI, 4 tv's at the bar, portable speaker & 2 wireless microphones, and Sonos for music.

This space is perfect for wedding welcome parties, large birthday celebrations, corporate events with short presentations, mingling, and holiday parties.



Morris & Mae East Side Sell Out + Patio *(no stadium seating)*

The East Side of Morris & Mae is a fabulous space surrounding our beautiful bar. This option is ideal for medium sized events with a capacity of 50-125 guests.

This space features lounge areas, tall community tables, traditional tables, chairs, and patio space. It is equipped with AV equipment such as 4 tv's at the bar, and Sonos for music.

This is a perfect space for wedding welcome parties, corporate happy hours, retirement parties, birthday celebrations, engagement, wedding, after parties and baby showers.



Morris & Mae West Side + Stadium Seating

The Morris & Mae West Side with stadium seating is a versatile space for groups of 30-90 guests and includes the mezzanine, 3 huddle spaces and Bonanza conference room.

It includes a lounge area, stadium seating, tables, and chairs. It is equipped with AV equipment such as a projector with Apple TV and HDMI, portable speaker & 2 wireless microphones, and Sonos for music.

This space is best for presentations, corporate events, movie nights, birthday parties, film festivals, and youth groups.



Private Event Space + Patio

The Private Event Space with Patio is an intimate, small space for gatherings of 20-80 guests.

It features a lounge area, tables, chairs, and a garage door that opens to the patio. It is equipped with AV equipment such as a TV with Apple TV and HDMI, and Sonos for music.

This versatile space is best suited for small wedding welcome parties, birthday celebrations, post-wedding brunches, baby showers, corporate and training events with presentations, mingling, and holiday parties.



***Booking minimum of 3 hours.**

EVENT SPACE OVERVIEW

| Space | Size (SF) | Max Capacity | Rental Fee* | Bar Package | AV Capabilities | Comments |
|--|--------------|-----------------------------|-------------|--------------|--|---|
| Morris & Mae Full Sell Out | 2000 sq. ft. | 250 | \$500/hr | Required** | Projector with large screen, HDMI, Apple TV, Sonos, Direct TV, Bar Tv's, Speaker/Mic | Morris & Mae's entire space, including stadium seats and patio. Includes stadium seats, 1 bar, 4 tv's. |
| Morris & Mae East Side | 1500 sq. ft. | 125 | \$250/hr | Required** | Sonos, Direct TV, Bar Tv's | Morris & Mae east side and patio. Includes 1 bar, 4 tv's.. |
| Morris & Mae West Side with Stadium Seating | 900 sq. ft. | 90 | \$250/hr | Not Required | Projector with large screen, HDMI, Apple TV, Sonos, Direct TV, Speaker/Mic | Morris & Mae west side of the wine wall. Includes stadium seats, 3 huddle spaces, mezzanine and Bonanza conference room, Projection screen, 1 bar. Option to have a satellite bar or use the main MM bar. |
| Private Event Space with Patio | 800 sq. ft. | 50 w/o patio 80 w/ patio | \$250/hr | Not Required | Large screen TV, HDMI, Apple TV, Sonos | Private event space with patio. Includes large tv. Option to have a satellite bar or use the main MM bar. |

3 hours minimum required

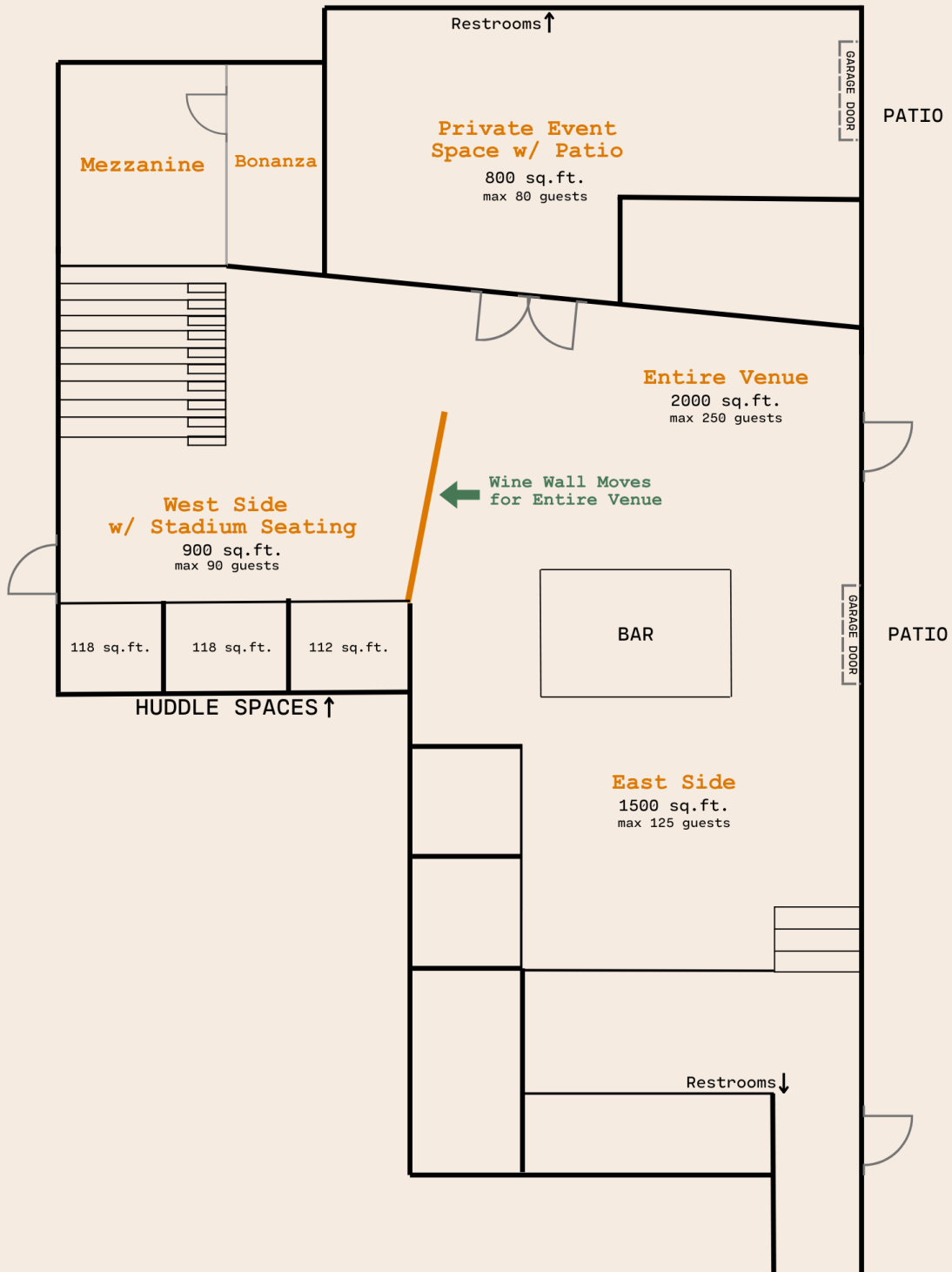
*Additional Fees - 25% Service Charge, 8.5% Sales Tax

** If N/A Bar is requested, please ask for updated venue pricing

DETAILS TO NOTE

- **Event Coordinator:** We provide a dedicated coordinator to assist with planning and execution.
- **Full Bar:** Featuring 20 hyperlocal taps, cocktails, wine, and non-alcoholic beverages.
- **Food Options:** In addition to our Preferred Caterer, you are welcome to bring in your own caterer or food. Your event coordinator will work with you on these details.
- **Food Trucks:** You are welcome to contract with a food truck to provide food for your guests.
- **Seating Options:** Family-style tables, high-top happy hour tables and soft-seating.
- **Maximum Capacity:** 250 guests for mingle-style events or 100 guests for a full sit down.
- **Providing Own Drinks:** Not allowed due to liquor license requirements.
- **Pet Policy:** Pets allowed on the patio space only.
- **Reservation Deposit:** 50% of the package price.
- **Final Balance:** Due 10 days prior to the event.
- **Free Parking:** On-street parking and nearby public lots.
- **Additional Time:** Price based on chosen event space.
- **Overnight Accommodation:** Not available on-site - see nearby hotel options.
- **Additional Fees:**
 - 25% service charge and 8.5% sales tax.
 - **Audio Fee: \$200** - includes portable speaker with 2 wireless microphones
**includes use of equipment but not tech services. If you require technical services such as stopping and starting a set playlist or video, you will need to bring your own services or contract with a DJ.*
- **Event Planning:** Available at \$100 per hour for full-service planning.
 - Including but not limited to - outsourced vendor contact such as caterer, DJ or photobooth, decorations, guest services.

EVENT FLOOR PLAN



CATERING OPTIONS

On-Site Catering

Charcuterie Board - \$10/guest

Italian cured meats, fresh variety of cheese, crackers, jam, chocolate & fruit

Preferred Caterers

Elevated Chef Services - Chef Andrew D'Aquanni

<http://elevated-chefservices.com/> • 303-810-8895

Specializing in private and personal chef services, Elevated Chef Services prides themselves on using only the highest quality ingredients to create well-balanced, exquisite menus tailored to your unique preferences and event needs.

Footers Catering

<https://footerscatering.com/>

Footers Catering is committed to using the freshest ingredients cooked on-site at every event. From customizing your perfect menu to handling special requests with a smile, their team will work hard and have fun creating an unforgettable event for you and your guests.

Launch Espresso

<https://www.launchcolorado.com/>

Located across the street from Morris & Mae. Launch serves healthy options with a touch of decadence. Because it's all freshly made, they can customize almost every item for your taste and diet.

Gold Mine Cupcakes

<https://www.goldminecupcakes.com/>

Gold Mine Cupcakes creates all recipes from scratch and are made fresh each day. They strive to be Colorado's first choice for cupcakes, while providing excellent customer service and a close family and community atmosphere.

BEVERAGE OPTIONS

BEER

Main Bar: all drafts on tap - Colorado brands (Coors, Golden City, New Terrain, Holidaily (GF), Elevation & many more)

Satellite Bar: variety of seasonal local cans



WINE

Red: Cabernet: Grounded, Pinot Noir: Cline, Malbec: Trapiche, Super-Tuscan

White: Chardonnay: Cambria, Pinot Grigio: Peter Zemmer, Sauvignon Blanc: McBride Sisters, Vinho Verde: Avelada

Rose: Daou

Prosecco: Zonin

LIQUOR

Breckenridge Vodka

Breckenridge Gin

Morris & Mae Special Reserved Barreled Bourbon

Peg Leg Rum

Lunazul Tequila

DRINK PACKAGES :

Beer & Wine

Three-hours of drinks*: \$20/guest

Ticketing pricing: \$10/ticket

Beer, Wine & Liquor

Three-hours of drinks*: \$24/guest

Ticketing pricing: \$12/ticket

Does not include mixed cocktails

Full Bar

Three-hours of drinks*: \$30/guest

Ticketing pricing: \$15/ticket

Soda**

Ticketing pricing: \$3/ticket

Coffee/Tea Package

One Carafe serves 20 guests - \$30/carafe

Includes half n half, sugars, tea packets

Classic Cocktail Bar Tier 1

One signature cocktail, liquor, beer & wine

Three-hours of drinks*: \$26/guest

Ticketing pricing: \$13/ticket

Classic Cocktail Bar Tier 2

Two signature cocktail, liquor, beer & wine

Three-hours of drinks*: \$28/guest

Ticketing pricing: \$14/ticket

Brunch Bar

Mimosas & Bloodys

Three-hours of drinks*: \$24/guest

Ticketing pricing: \$12/ticket

**Prices are for a three hour timeframe. Additional hours can be added on for \$10 per guest each hour.*

***Non-alcoholic drafts such as kombucha, canned beer, cider and wine are considered in the Beer & Wine packages.*

One bartender provided for 50 guests, two bartenders for 51-100 guests, 3 bartenders for 101-150 guests, etc. We have a No Shots of Alcohol or Drinks Served "Neat" policy for all hourly open bars. Acceptable under ticketed and cash bars.